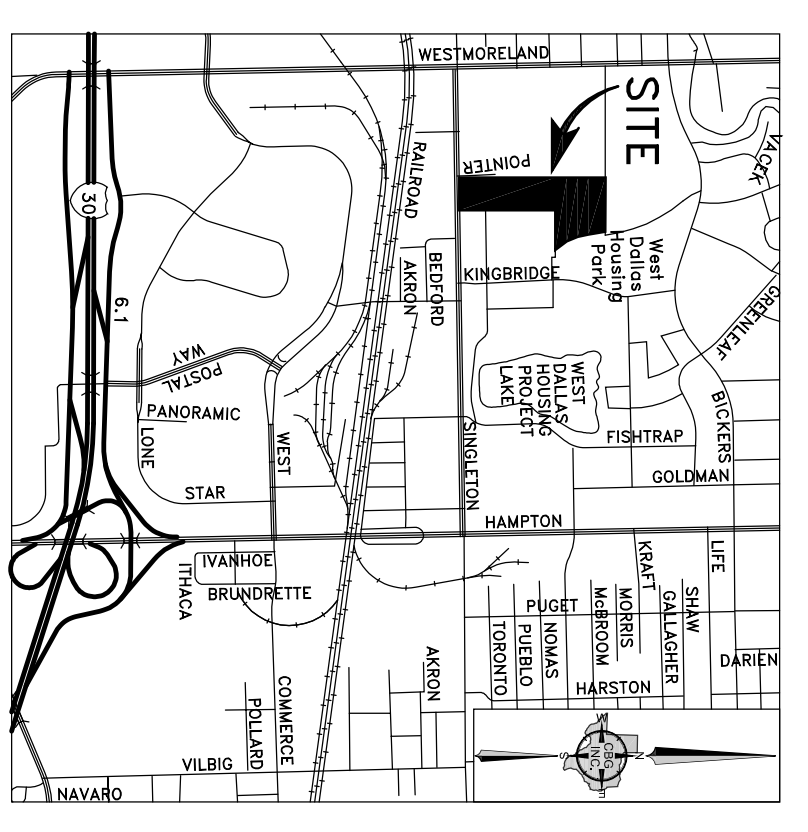


SCALE: 1" = 60'

THE DALLAS INDEPENDENT SCHOOL DISTRICT
BLOCK 8/7224
VOL. 810, PG. 1643
D.R.D.C.T.

REDEEMER BAPTIST CHURCH
BLOCK 7224
VOL. 91139, PG. 0720
D.R.D.C.T.

THE DALLAS INDEPENDENT SCHOOL DISTRICT
BLOCK 7/7228
VOL. 675, PG. 401-402, D.R.D.C.T.
VOL. 686, PG. 155 D.R.D.C.T.



VICINITY MAP
NOT TO SCALE

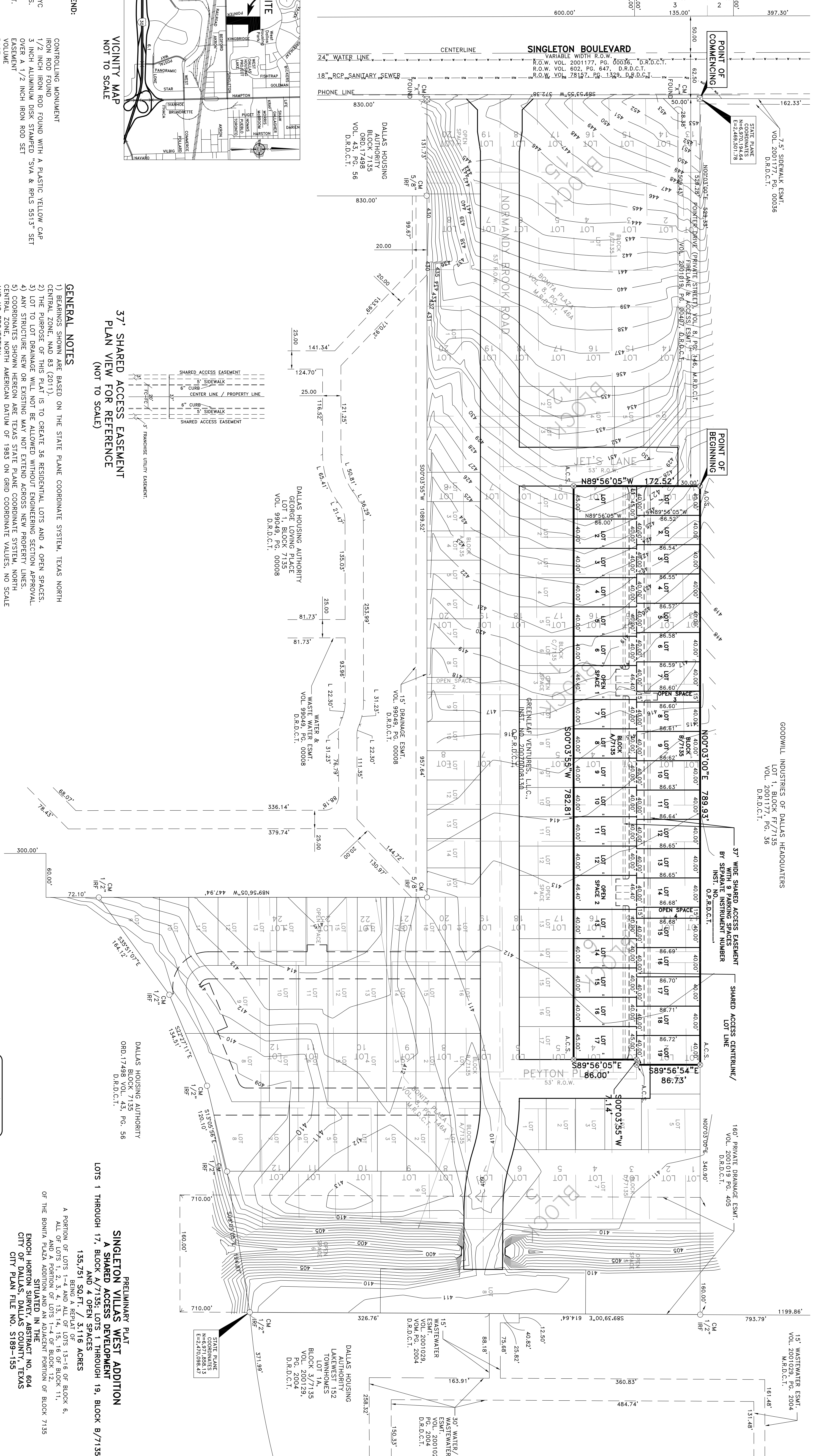
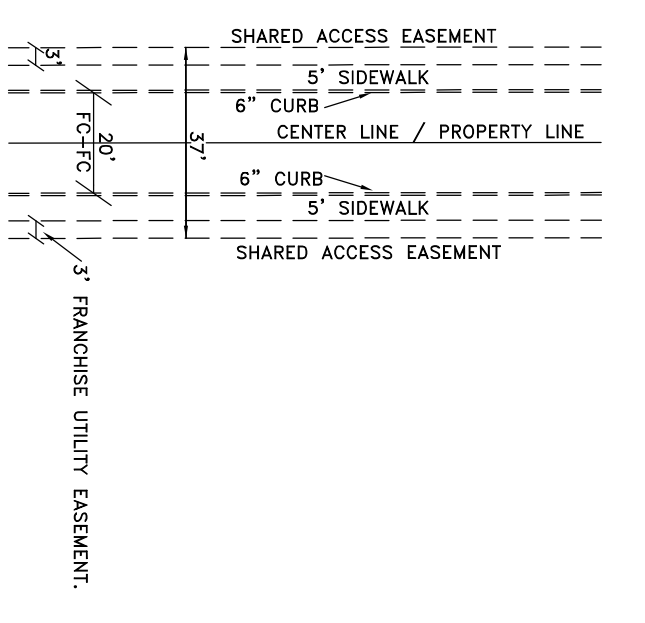
LEGEND:

- CM CONTROLLING MONUMENT
- IRF IRON ROD FOUND
- IRF YC 1/2 INCH IRON ROD FOUND WITH A PLASTIC YELLOW CAP
- A.C.S. 3 INCH ALUMINUM DISK STAMPED "SVA & PRLS 5513" SET OVER A 1/2 INCH IRON ROD SET
- ESMT. EASEMENT
- VOL. VOLUME
- PG. PAGE
- INST. NO. INSTRUMENT NUMBER
- SO. FT. SQUARE FEET
- ORD. ORDINANCE
- R.O.W. RIGHT-OF-WAY
- M.R.D.C.T. MAP RECORDS, DALLAS COUNTY, TEXAS
- O.P.R.D.C.T. OFFICIAL PUBLIC RECORDS, DALLAS COUNTY, TEXAS

GENERAL NOTES

- 1) BEARINGS SHOWN ARE BASED ON THE STATE PLANE COORDINATE SYSTEM, TEXAS NORTH CENTRAL ZONE, NAD 83 (2011).
- 2) THE PURPOSE OF THIS PLAT IS TO CREATE 36 RESIDENTIAL LOTS AND 4 OPEN SPACES.
- 3) LOT TO LOT DRAINAGE WILL NOT BE ALLOWED WITHOUT ENGINEERING SECTION APPROVAL.
- 4) ANY STRUCTURE NEW OR EXISTING MAY NOT EXTEND ACROSS NEW PROPERTY LINES.
- 5) COORDINATES SHOWN HEREON ARE TEXAS STATE PLANE COORDINATE SYSTEM, NORTH CENTRAL ZONE, NORTH AMERICAN DATUM OF 1983 ON GRID COORDINATE VALUES, NO SCALE AND NO PROJECTION.
- 6) BENCHMARK IS A SQUARE CUT IN CONCRETE CURB CENTER OF RADIUS WEST CORNER OF TRIANGULAR MEDIAN AT JUNIOR STREET AND DEATY STREET. (ELEV.=431.88')

37' SHARED ACCESS EASEMENT
PLAN VIEW FOR REFERENCE
(NOT TO SCALE)



PRELIMINARY PLAT
SINGLETON VILLAGES WEST ADDITION
A SHARED ACCESS DEVELOPMENT
LOTS 1 THROUGH 17, BLOCK A/7135; LOTS 1 THROUGH 19, BLOCK B/7135;
AND 4 OPEN SPACES
135,751 SQ.FT. / 3.116 ACRES

(SHEET 1 OF 2)

OWNER: GREENLEAF VENTURES, L.L.C.
A TEXAS LIMITED LIABILITY COMPANY
VICOR TOLEDO, MANAGER
11700 PRESTON RD., SUITE 660-192,
DALLAS, TEXAS 75230
214-755-9905

PLANNING & SURVEYING
Main Office
12025 Shiloh Road, Ste. 290
Dallas, TX 75228
P 214.340.0485
F 214.340.2216
SURREY TEXAS LLC
11700 Preston Rd., Suite 660-192
Dallas, Texas 75230
www.cbgtx.com

SCALE: 1"=60' / DATE: JANUARY 3, 2019 / JOB NO. 1802366 / DRAWN BY: TP